

and of environmental and climatic change.

There are more than 30 branches across the UK, of which this branch is the largest. Butterfly Conservation has over 25 reserves, three of which are in Hampshire.

As a member, you will receive:

- the national magazine *Butterfly* three times a year and the Branch newsletter at least twice a year
- an annual report summarising the status of butterflies and moths in Hampshire and the Isle of Wight

Have an opportunity to

- attend field trips, training courses and talks
- help manage reserves such as this one
- take part in systematic recording of butterflies and moths in Hampshire and the Isle of Wight

For more details about the reserves and the Branch, please contact the Branch Organiser:

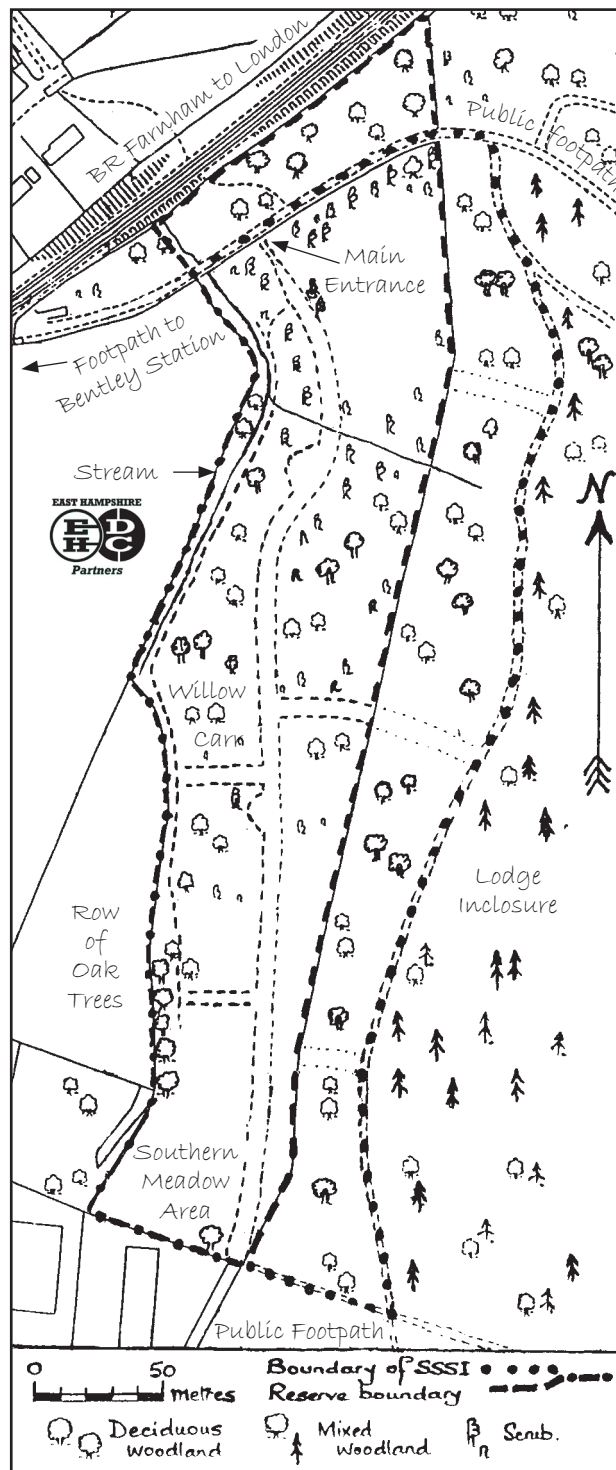
Jenny Mallett, Great Fontley Farm, Titchfield Lane, Wickham, PO15 6EA Tel 01329 832177 Or visit our web site www.hantsiow-butterflies.org.uk

Benefactors of Bentley Station Meadow include:

British Gas Southern, East Hants District Council, Eric Hale, Hampshire County Council, Natural England.

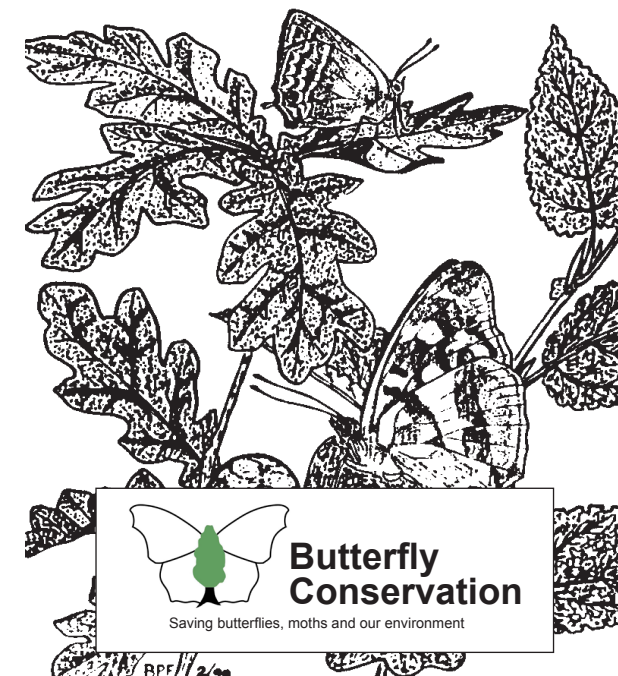
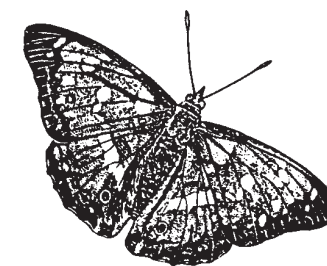
Butterfly Conservation

Company limited by guarantee, registered in England (2206468)
Registered Office: Manor Yard, East Lulworth, Wareham, Dorset BH20 5QP. Charity registered in England and Wales (254937) and in Scotland (SCO 39268). VAT No GB 565 90 70 16.



Bentley Station Meadow

Nature Reserve



Butterfly Conservation

Saving butterflies, moths and our environment

Bentley Station Meadow, near Alton, consists of nine acres of ancient meadow, much of which had become overgrown with scrub.

After the purchase of the meadow in the summer of 1992, phased clearance work was carried out. Now four areas of the reserve can be identified.

The section between the railway and the metalled track consists of oak woodland. This is managed to reduce the scrub and provide ideal conditions for woodland flowers, especially violets, to give a suitable breeding area for the Silver-Washed Fritillary. Habitat at the edge encourages Brimstone and Orange-tip.

South of the track, the reserve is part of a Site of Special Scientific Interest (SSSI). Just inside the entrance the meadow has a particularly good range of wildflowers, including Devil's-bit Scabious and Wild Angelica, with mature blackthorn creating a warm, sheltered environment.

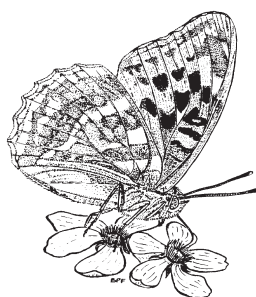
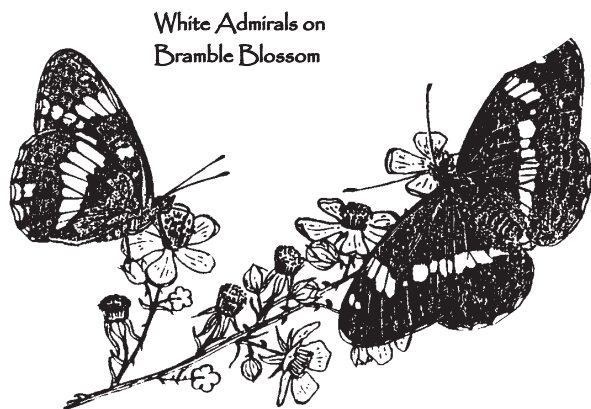
The central part of the reserve contains many willows, including the Great Willow, foodplant

of the Purple Emperor. The wide rides through this area provide valuable woodland edge which is much favoured by many butterflies.

The southernmost area of the meadow contains a range of tall grasses, bracken and nettles. The grasses are the foodplants for many of the Skippers and Browns, the nettles being used by such colourful butterflies as Comma, Peacock, Red Admiral and Small Tortoiseshell. The small oaks support Purple Hairstreak.

The adjoining forest is the home of other butterflies and moths, such as White Admiral and Broad-bordered Bee Hawkmoth and White Admiral, which visit the meadow to feed on nectar-rich flowers such as Bugle and bramble. Some 30 species of butterfly and over 400 moths have been recorded, plus bees, hoverflies and dragonflies.

The conservation work, which includes scrub clearance and grazing by cattle, is supported by a Countryside Stewardship Scheme administered by Natural England. Guided visits for groups are welcome by appointment.



Please help us to protect this beautiful place.

The calendar opposite shows the months in which each species of butterfly might be seen.

Butterfly	M	A	M	J	J	A	S	O
Brimstone	•	•	•	•	•	•	•	•
Brown Argus			•	•		•	•	•
Clouded Yellow				•		•	•	•
Comma	•	•	•	•		•	•	•
Common Blue			•	•		•	•	•
Dark Green Fritillary				•		•	•	
Gatekeeper						•	•	
Green Hairstreak			•	•				
Green-veined white		•	•	•		•	•	
Holly Blue		•	•	•		•	•	•
Large Skipper				•		•	•	
Large White		•	•	•		•	•	•
Marbled White				•		•	•	
Meadow Brown				•		•	•	•
Orange-tip		•	•	•				
Painted Lady				•		•	•	•
Peacock	•	•	•	•		•	•	•
Purple Emperor						•	•	
Purple Hairstreak				•		•	•	
Red Admiral	•	•	•	•		•	•	•
Ringlet				•		•	•	
Silver-washed Fritillary						•	•	
Small Copper		•	•	•		•	•	•
Small & Essex Skippers				•		•	•	
Small Tortoiseshell	•	•	•	•		•	•	•
Small White		•	•	•		•	•	•
Speckled Wood	•	•	•	•		•	•	•
White Admiral				•		•	•	

Butterfly Conservation is a national charity. Founded in 1968 it is dedicated to saving butterflies and moths and our environment. It is recognised that butterflies and moths are indicators of biodiversity.