



# Butterfly Conservation

Saving butterflies, moths and their habitats

## South East Woodlands Project

### Project Update Autumn 2007

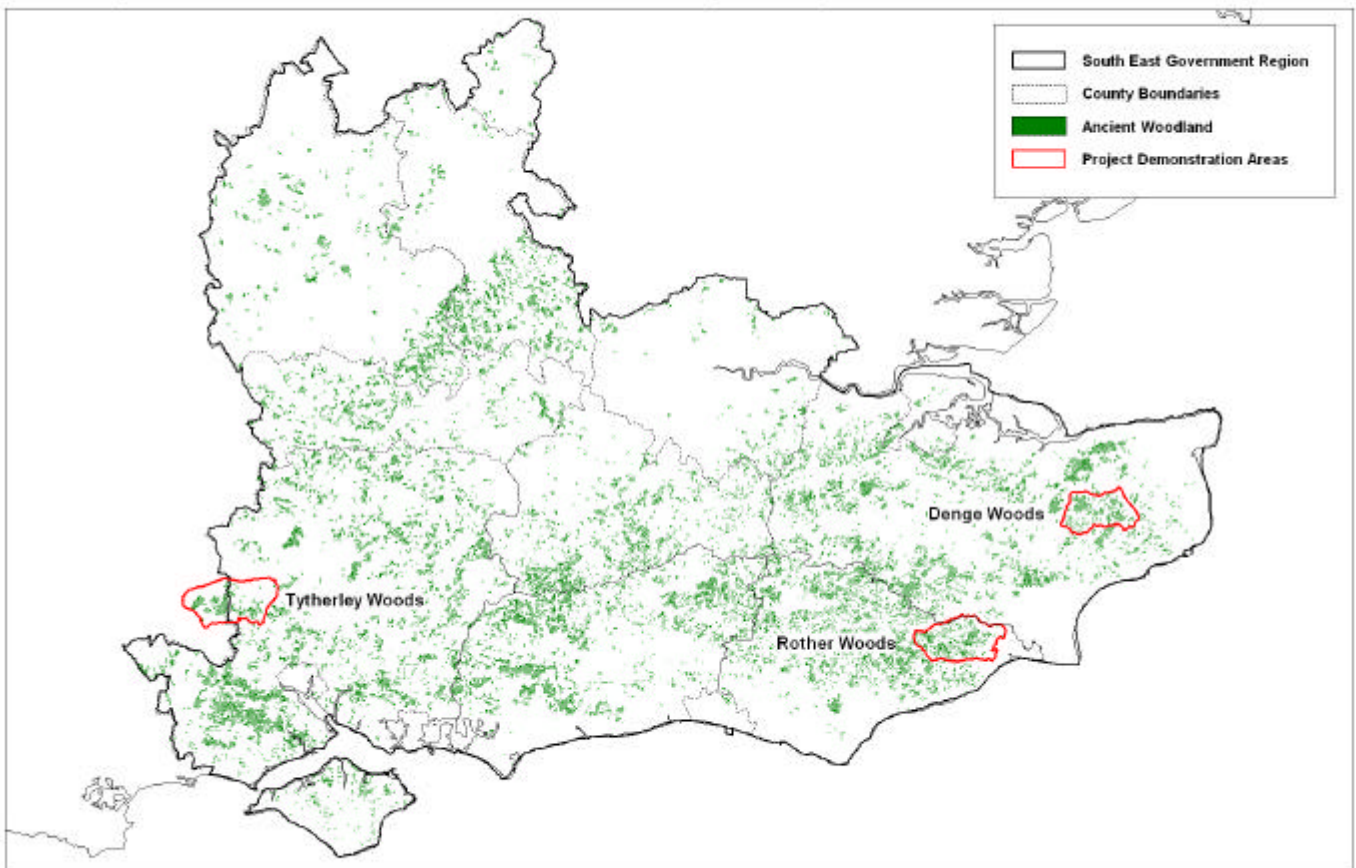


Pearl-bordered Fritillary (*G. Knass*)

Woodland butterflies and moths are among the most threatened groups of insects in the UK, and for many species their declines have been fastest in the South East. This is one of the most heavily wooded areas of the country, but many woods are neglected or under-managed because of changing management practices, lack of information and the economics of woodland management. To tackle these problems, Butterfly Conservation is launching its biggest conservation project so far, with support from The Heritage Lottery Fund, The Tubney Charitable Trust and many other funders.

This ambitious project, developed with the Forestry Commission and other partners, will use threatened butterflies and moths as indicator species for sustainably managed woodlands rich in biodiversity, aiming to reinvigorate woodland management and halt the decline of some of our rarest species. We will develop three landscape-scale demonstration projects, in East Sussex, Kent and Hampshire, and use them to promote woodland management across the region through training, information, support and advice for landowners, conservation volunteers and local communities.

Conserving the Woodland Butterflies and Moths of South East England: Project Areas



### ***The project will:***

- Conserve and enhance the South East's woodland heritage by restoring connected wooded landscapes in three biodiversity-rich demonstration areas, using them to promote sustainable woodland management and support the woodland economy;
- Provide free training and advice to woodland owners, and land managers to ensure that existing conservation mechanisms, including grant schemes, function more effectively;
- Engage communities in South East England in celebrating and conserving their unique woodland heritage and the threatened butterflies and moths it supports;
- Build, train and support a network of skilled volunteers to champion biodiversity by monitoring wildlife, providing information and support to landowners and guiding conservation action in local communities.



We are currently recruiting three new Project Officers to work full-time for three years in our demonstration areas: the Denge Woods, south of Canterbury in Kent; the Rother Woods, near Rye in East Sussex, and the Tytherley Woods, on the Hampshire/Wiltshire border.

Over the next few months we will be making contact with local landowners, organizations and communities in the project areas, and from spring 2008 we will be holding free training workshops, guided walks and other public events, as well as providing free advice and resources to woodland managers.

*There will be events, free training and opportunities to get involved at woodland locations right across the South East, so keep an eye on our website or contact the Project Manager for more information.*

**[www.butterfly-conservation.org](http://www.butterfly-conservation.org)**

*Project Manager: Dr Dan Hoare (01730 823 810 [dhoare@butterfly-conservation.org](mailto:dhoare@butterfly-conservation.org))*

